



Children's Safety Network



[About CSN](#) | [Contact Us](#) | [Stay Connected](#)

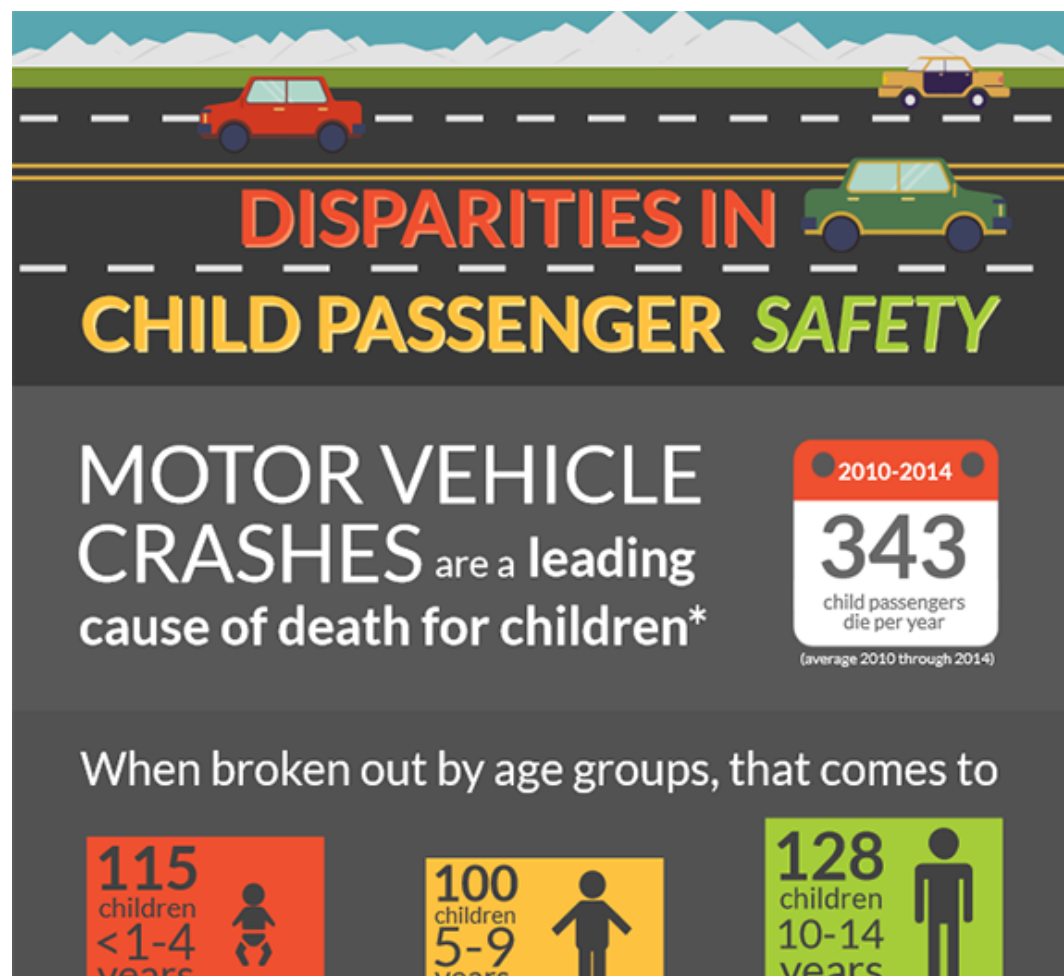

SEARCH

[Home](#) » [Disparities in Child Passenger Safety](#)

Disparities in Child Passenger Safety

This CSN infographic focuses on the disparities in child passenger deaths and offers prevention strategies.

[Download a print version of the infographic](#)



INFOGRAPHIC LISTINGS

[The Facts On Childhood Drowning](#)

[Falls in Children and Youth: Hospitalizations](#)

[How Common Are Bullying and Fighting among High Schoolers?](#)

[E-Cigarette Poisoning](#)

[Halloween Safety](#)

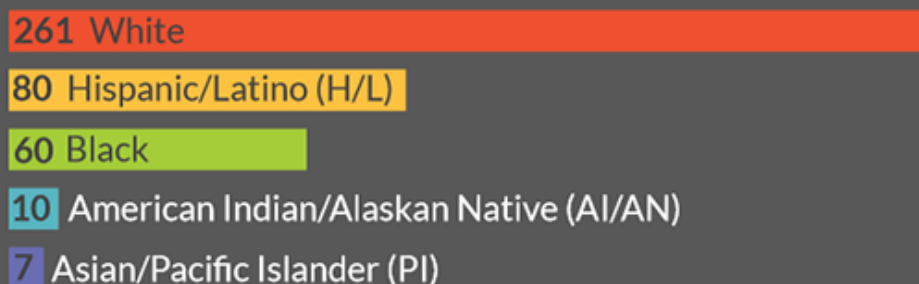
[Boating Safety](#)

[Child Access to Firearms in the United States](#)

[Playground-Related Injuries Treated in the Emergency Department](#)

[Magnitude of Firearm-Related Fatalities in](#)

When broken out by race/ethnicity†, that comes to



child passenger deaths per year

Numbers do not add up to 343 due to rounding

But these numbers don't tell the **WHOLE STORY...**

AI/AN child passengers die at a *higher rate* than
any other racial/ethnic group

This means that for every 1,000,000



AI/AN child passengers are:

2.6 times more likely to die than **Black** child passengers
 3.0 times more likely to die than **White** child passengers
 3.1 times more likely to die than **H/L** child passengers
 7.8 times more likely to die than **Asian/PI** child passengers



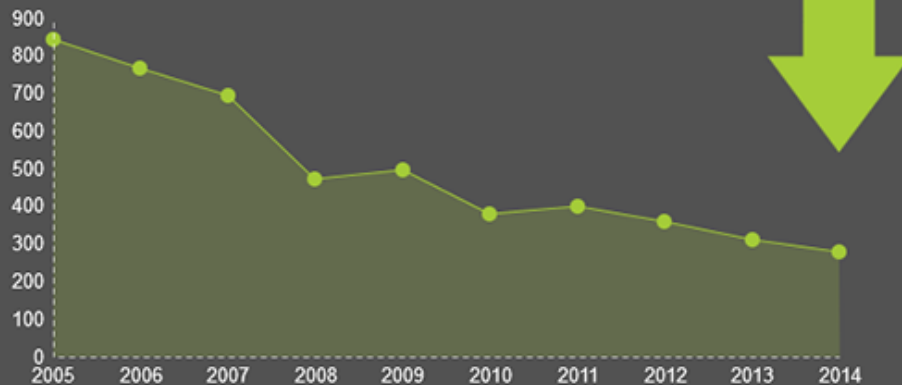
Children in **RURAL** areas are **2 to 5 times more likely** to
be seriously/fatally injured in a crash than in **URBAN** areas



THE GOOD NEWS

is that these deaths are **PREVENTABLE**

Child passenger deaths have decreased by
67% from 2005 through 2014



Child safety seats can reduce fatalities by



71%
for infants



54%
for toddlers

4/5



parents report that their child uses
age-appropriate restraints on **every trip**



Parents who received information
about child safety seats from their
child's **doctor's office** were nearly
TWICE as likely to use the correct restraints

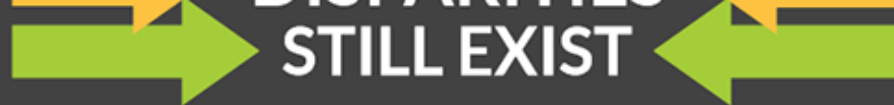
2X

**Child restraint system (CRS)
checks** by certified child
passenger safety technicians
during **WELL-CHILD VISITS**

increase correct safety seat use
in urban, low-income communities



While the gap is closing,
DISPARITIES



STILL EXIST

What can we do to fix it?



Provide *culturally competent outreach* to **vulnerable** and **underserved** populations

Tailor programs and campaigns to reach parents of *different cultural* and *socioeconomic backgrounds*



Distribute education materials in **MULTIPLE LANGUAGES**



Have *health care providers* talk to parents about age-appropriate child restraint systems



Provide CRS **CHECKS** at health centers in vulnerable communities



Distribute *free or low-cost child safety seats and booster seats* to parents in vulnerable and underserved populations



* Children are defined as <15, toddlers are defined as 1 through 4, and infants are defined as <1 year
† White, Black, AI/AN, and Asian/PI are non-Hispanic

For detailed sources and more information, visit:
ChildrensSafetyNetwork.org/infographics/cps-disparities

May 2016

Disparities in Child Passenger Safety

Motor vehicle crashes are a leading cause of death among children^[*]

From 2010 through 2014, an average of 343 child passengers died per year

When broken out by age, that comes to:

- 115 children <1 through 4 years old
- 100 children 5 through 9 years old
- 128 children 10 through 14 years old

When broken out by race/ethnicity^[†], that comes to:

- 261 White
- 80 Hispanic/Latino (H/L)
- 60 Black
- 10 American Indian/Alaskan Native (AI/AN)
- 7 Asian/Pacific Islander (PI)

child passenger deaths per year

But these numbers don't tell the whole story...

AI/AN child passengers die at a higher rate than any other racial/ethnic group

This means that for every 1,000,000

- White children, 5.6
- H/L children, 5.4
- Black children, 6.5
- AI/AN children, 16.7
- Asian/PI children, 2.1

die as passengers

AI/AN child passengers are:

- 2.6 times more likely to die than Black child passengers
- 3.0 times more likely to die than White child passengers
- 3.1 times more likely to die than H/L child passengers
- 7.8 times more likely to die than Asian/PI child passengers (WISQARS)

Children in rural areas are 2 to 5 times more likely to be seriously or fatally injured in a crash than in urban areas (Huseth, 2013)

The good news is that these deaths are preventable

Child passenger deaths have decreased by 67% from 2005 through 2014 (WISQARS)

Year	Deaths
2005	842
2006	763
2007	694
2008	470
2009	495
2010	376
2011	396

2012	356
2013	309
2014	277

Child safety seats can reduce fatalities by 71% for infants and 54% for toddlers (NHTSA, 2013)

4 out of 5 parents report that their child used the age-appropriate restraint on every trip (Macy, 2014)

Parents who received information about child safety seats from their child's doctor's office were nearly twice as likely to use the correct restraints (Macy, 2014)

Child restraint system (CRS) checks by certified child passenger safety technicians during well-child visits increase correct safety seat use in urban, low-income communities (Quinlan, 2007)

While the gap is closing, disparities still exist

What can we do to fix it?

Provide culturally competent outreach to vulnerable and underserved populations

Tailor programs and campaigns to reach parents of different cultural and socioeconomic backgrounds

Distribute education materials in multiple languages

Have health care providers talk to parents about age-appropriate child restraint systems

Provide CRS checks at health centers in vulnerable communities

Distribute free or low-cost child safety seats and booster seats to parents/caregivers in vulnerable and underserved populations

Sources

WISQARS. Fatal Injury Data. WISQARS (p. Accessed March 15, 2016 by R. Willmer). Atlanta, GA. Retrieved from <http://www.cdc.gov/injury/wisqars/fatal.html>

National Highway Traffic Safety Administration (NHTSA). (2013). *2011 Children Traffic Safety Fact Sheet*. Retrieved from <http://www-nrd.nhtsa.dot.gov/Pubs/811767.pdf>

Huseth, Andrea. (2013). *Misinformation Contributing to Safety Issues in Vehicle Restraints for Children: A Rural/Urban Comparison*, MPC-13-264. North Dakota State University - Upper Great Plains Transportation Institute, Fargo: Mountain-Plains Consortium. Retrieved from: <http://www.mountain-plains.org/pubs/pdf/MPC13-264.pdf>

Macy, M. L., Cunningham, R. M., Resnicow, K., & Freed, G. L. (2014). Disparities in age-appropriate child passenger restraint use among children aged 1 to 12 years. *Pediatrics*, 133(2), 262–71.
<http://doi.org/10.1542/peds.2013-1908>

Quinlan, K. P., Holden, J., & Kresnow, M.J. (2007). Providing car seat checks with well-child visits at an urban health center: a pilot study. *Injury Prevention: Journal of the International Society for Child and*

Adolescent Injury Prevention, 13, 352–354.


<http://doi.org/10.1136/ip.2006.015099>

To view this infographic on the web, visit:

<http://www.ChildrensSafetyNetwork.org/infographics/cps-disparities>

[*] Children are defined as <15, toddlers are defined as 1 through 4, and infants are defined as <1 year

[†] White, Black, AI/AN, and Asian/PI are non-Hispanic

Attachment	Size
 Download a print version of the infographic	478.76 KB

Topics:

[Injury Disparities](#)

[Child Passenger Safety](#)

Resource Type: CSN Infographic



Children's Safety Network

[Technical Assistance](#) [State Information](#) [Injury Topics](#) [Resources](#)

[CSN on Social Media](#) [Child Safety CoIIN](#) [NCCSI](#)

This project is supported by the Health Resources and Services Administration (HRSA) of the U.S. Department of Health and Human Services (HHS) under the Child and Adolescent Injury and Violence Prevention Resource Centers Cooperative Agreement (U49MC28422) for \$1,199,683. This information or content and conclusions are those of the author and should not be construed as the official position or policy of, nor should any endorsements be inferred by HRSA, HHS or the U.S. Government.



© 1994 - 2016 Education Development Center, Inc. All Rights Reserved.

The people depicted in the photographs that appear on this website are models and are used for illustrative purposes only.

For the best experience, we recommend using the most up-to-date versions of Chrome, Firefox, Internet Explorer or Safari.

[ABOUT CSN](#)

[PRIVACY POLICY](#)

[LEGAL](#)

[ADMIN LOGIN](#)